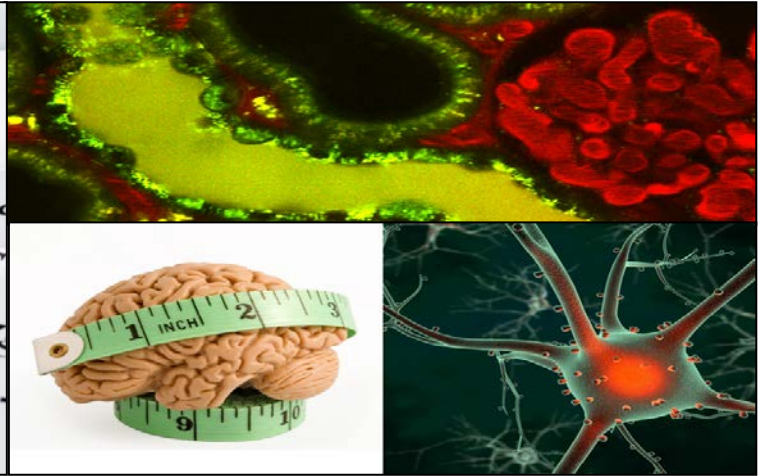


USC Diabetes & Obesity Research Institute is pleased to announce its  
First Annual Research Symposium:

## FROM CELLS TO PSYCHOLOGY: **INTEGRATIVE INSIGHTS INTO DIABETES & OBESITY**



**Wednesday, February 19, 2014**

Keck School of Medicine of USC  
Norris Research Tower: Aresty Auditorium  
1450 Biggy Street, Los Angeles, CA 90033

### FEATURED SPEAKERS AND TOPICS:

- **Carey Lumeng, MD, PhD**

University of Michigan Medical School  
"Adipose Tissue Leukocytes and Obesity-Induced Inflammation"

- **Christopher J. Rhodes, PhD**

The University of Chicago Medicine, Kovler Diabetes Center  
"Three Hidden Signals Show How  $\beta$ -Cells are Primed for Their Own Demise"

- **Julie Lumeng, MD**

University of Michigan Center for Human Growth and Development  
"Biobehavioral mechanisms linking psychosocial stress and obesity in young, low-income children"

- **Janos Peti-Peterdi, MD, PhD**

Keck School of Medicine of USC  
"From metabolic stress to disease: (Patho)physiology of succinate and GPR91"

- **Helena Chui, MD**

Keck School of Medicine of USC  
"Controversial links between diabetes mellitus and Alzheimer disease"

- **Michael Stallcup, PhD**

Keck School of Medicine of USC  
"Role of the glucocorticoid receptor and its coregulators in diabetes and obesity: a search for novel therapeutic strategies that rely on the gene-specific actions of coregulators"

- **Scott Kanoski, PhD**

University of Southern California  
"How do Glucagon-Like Peptide-1 Ligands Reduce Food Intake and Body Weight?"

8am to 9am - Registration & Continental Breakfast

9am to 4pm - Presentations

4pm to 5pm - Wine & Cheese Reception

For more information & registration  
<http://usc.edu/esvp> (ESVP code: dori2014)  
<http://dori.usc.edu>

For questions, please contact  
Christina Ayala at [trujillc@usc.edu](mailto:trujillc@usc.edu)